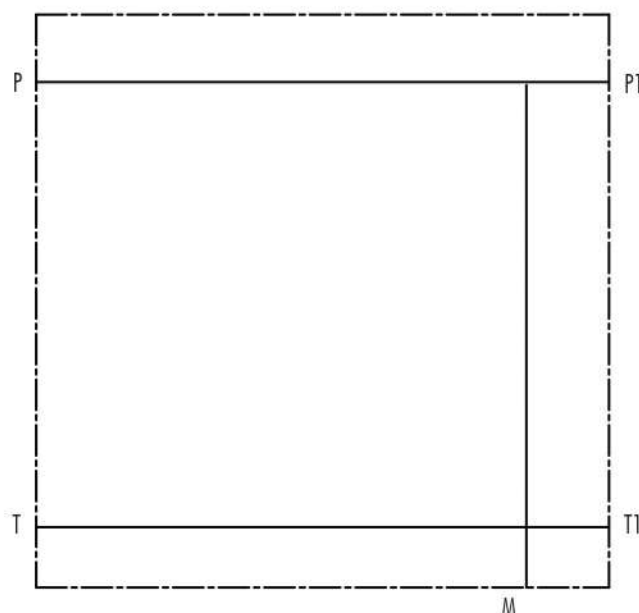
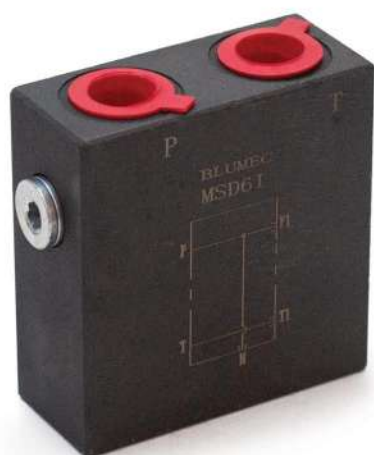


MSD SERIES

MODULAR SOLENOID DIRECTIONAL

MSD6I



TECHNICAL DATA

Size	6
Max flow rate (L/min)	40
Max operating pressure (MPa)	25
Valve body (material Surface treatment)	(casting&phosphating surface)
Oil cleanliness	NAS1638 and ISO4406 class 20/18/15

